



CAMPBELL RIVER ART GALLERY'S tours and programs for schools

The C.R. Art Gallery offers interactive programs to enlarge students' appreciation of art. Gallery exhibitions change every five weeks and offer new viewing and programming opportunities. We can design programs to fit specific needs or send an artist to the classroom to lead a workshop. Materials are included in class cost. Watch for periodic drop-in art instructionals for teachers.

For scheduling or more information call 250-287-2261.



Guided Exhibition Tours - K to 5

Tuesday - Friday, 9:30am – 12:00pm
(45min) Fee: \$15

An exhibit tour and art detective game spark discussion and critical thinking of the work on display, encouraging children to see, interpret and discuss art.



Guided Exhibition Tour/Art Activity

Tuesday - Friday, 9:30am – 12:00pm
All ages (1hr) Fee \$25

Students view and discuss the current exhibit to form opinions and gain inspiration for a related art activity in the Gallery's studio. Materials/supplies included.



Artists in the Schools

Flexible to school hours.
All ages (1 hr) Fee: \$50

A limited number of classes at subsidized rate of \$25 sponsored by Friends of CR Art Gallery.

Over 10 regional artists are available to give demos or lead projects in your classroom. Explore paper mache, acrylic painting, monoprinting, ceramic clay, art portfolio prep, fiber art. Offered by Candace Holmes, Jean Thomas Aston, Katherine Douglas Knappett, Ellen Statz, Sandra Lamb, Kristen Schofield-Sweet...



Teachers Meet & Greet the Artists

This event is geared to jr & sr high teachers and is available by special arrangement.

Meet the artists who deliver programs in the schools and at the Gallery. Learn about their work and background. Try your hand at a technique to gain new skills that help your students respond to art. Weekdays, 3:30-5pm.



Please See Reverse For Exhibition-Related Programming

Subsidies for Artist in Schools and other School Programming are generously donated by:
Friends of the Campbell River Art Gallery

Brochure printing courtesy of:



Royal LePage Advance Realty

Choose A Program For One Of These Exhibitions



We Love This Stuff So Much...

Laurel Terlesky
Jan 21 - Feb 26



"We Love This Stuff So Much..." explores the iconography of electricity (usb cords, wires, power cords, solar panels, etc.) and its manifestation as part of contemporary culture's sense of self. By incorporating street art spray paint into classical oil painting techniques, Terlesky infuses a pop-culture approach into her work.

Program Options:

A.

Electrifying Self-Portraits

Students will be led in a discussion about how Terlesky uses electricity in her paintings. In the studio, they will explore how they use electricity by drawing a self-portrait using crayons, coloured pencils, and markers and then "electrifying" the self portrait by incorporating images of all of the different types of electricity they use in daily life.

All ages (1hr) Fee \$25

B.

Futuristic Paper Lanterns

Focusing on the theme of electricity and energy, students will draw or paint a picture of what they imagine energy of the future will look like and then learn how to turn their image into a cool paper lantern!

All ages (1hr) Fee \$25

Hot Light



Megan Wilson, Brian Longhurst, Blaine Campbell

Jan 21 - Feb 26



Hot Light presents multi-media work by Cumberland artists Megan Wilson and Brian Longhurst and Vancouver artist Blaine Campbell. Each artist presents pieces that examine objects that generate heat and light and, in so doing, find themselves in a state of perpetual transition.

Program Options:

A.

Heat and Light Collages

The different types of objects that generate heat and/or light are the focus of the *Hot Light* exhibition. In the studio, students will brainstorm about the different ways heat and light are generated like firewood, matches, and lightbulbs. Then, using torn magazines and paper, students will create collages illustrating these different objects and elements.

All ages (1hr) Fee \$25

B.

Light Exploration

The different ways we generate light will be a focus of the Gallery tour. In the studio, students will complete a project that focuses on light by way of how it filters through colour and design. Students could create an image using different colours of cellophane cut out and pasted on clear acetate, to create a type of stained glass effect.

All ages (1hr) Fee \$25

For scheduling or more information call 250-287-2261.

Choose A Program For One Of These Exhibitions



29th Annual Member's Show

Members of the Gallery & CR Arts Council

March 4 - April 8



A collaborative exhibition of over 60 regional artists who are members of the CR Arts Council & CR Art Gallery, showcasing the diversity and quality of art making practices in the north Vancouver Island region.

Program Options:

A.

Can You Remember?

In the Gallery, students will be led in a discussion about all of the different types of artwork exhibited. After each choosing a favorite, students will try to draw the work from memory back in the studio. After the set amount of time, we will return to the gallery and see what details we remembered and what parts we forgot!

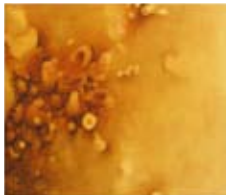
All ages (1hr) Fee \$25

B.

Figures, Landscapes, and Abstractions, Oh My!

The diverse range of imagery in the Member's exhibition such as landscapes, figures, and abstractions will be the focus of the Gallery tour. Each student will pick their favorite piece and use watercolours to create their own version of that work based on the imagery.

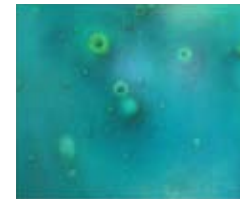
All ages (1hr) Fee \$25



Passive Aggressive

Linda Findlay

April 15 - May 20



Passive Aggressive seeks to explore our relationship with viruses and bacteria through acrylic on panel paintings. Taking inspiration from the brightly coloured dyes scientists use to view organisms, Findlay's paintings explode with colour. Her works are also metaphors for the "unseen" in each of our lives, those aspects that we have trouble acknowledging or recognizing.

Program Options:

A.

Colorful Interpretation

In the Gallery, students will be led in a discussion about how colours affect our perception of things. Back in the studio, students will use watercolour paints to explore how the use of different colours can make scary things look less frightening and sometimes even beautiful.

All ages (1hr) Fee \$25

B.

Abstract Ink

Findlay's focus on microscope images will be the discussed in this Gallery tour. Back in the studio, students will create their own imaginary microscope magnifications by saturating a heavier weight paper in water and squirting liquid ink on it. The ink disperses in beautiful bright colours on the wet paper creating one-of-a-kind imaginary magnifications.

All ages (1hr) Fee \$25

For scheduling or more information call 250-287-2261.

Choose A Program For One Of These Exhibitions



Information System Marijo Swick **April 15 - July 1**



The alternating identities of science and faith form the undercurrent of Swick's work. Just as DNA molecules produce a unique individual, each work re-uses or re-combines segments and symbols of other paintings, collage, sculptural elements and discovered objects.

Program Options:

A.

Building Blocks

Swick's use of DNA and visual markers will be the focus of the Gallery tour. In the studio, students will each create their own "building block" of DNA using magazine pictures, paper, and markers to describe themselves. Then, the class will create a larger image by combining everyone's blocks in different combinations.

All ages (1hr) Fee \$25

B.

Visual DNA Self-Portraits

The different layered elements comprising Swick's work will be discussed in the Gallery. Back in the studio, each student will create a collaged alternative self-portrait using magazine cut-outs, drawings, crepe paper, and decorative scissors to assemble a visual "DNA" record of what makes them unique.

All ages (1hr) Fee \$25



Fragile Entanglements Marilyn Chapman **May 26 - Aug 6**



Inspired by the extraordinary beauty of the coastal landscape, Marilyn Chapman's work has been described as an organic interpretation of nature and a close-up look at the complex life systems we rely upon. Fragile Entanglements is a series of acrylic paintings which explore the delicate co-existence of ecosystems and the intricacies of life systems.

Program Options:

A.

Ecosystem Exploration

Students will be led in a discussion about the different ecosystems found in Chapman's work and in nature. In the studio, they will use watercolour paints to imagine and create the ecosystem of their choice.

All ages (1hr) Fee \$25

B.

Finding a Balance

Chapman's focus on the delicate co-existence between nature and mankind will be focused on and explored in the Gallery tour. In the studio, students will use magazine cut-outs and watercolour paints to illustrate how what we do as humans affects the environment.

All ages (1hr) Fee \$25

For scheduling or more information call 250-287-2261.